

# Quick Installation Guide

Security Pan/Tilt Camera

CP3/CP4/CP5/CP6/CP7/CP8/CP9

This guide is applicable to the Ethernet port version and non-Ethernet port version of Security Pan/Tilt Camera. The Ethernet port version is used for illustration unless otherwise specified.

For product or function details, please go to [www.tendacn.com](http://www.tendacn.com) to download the user guide.

## Package contents



Camera x 1



Power adapter x 1



Base x 1



Installation template x 1



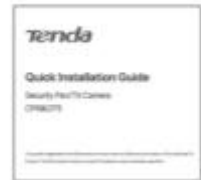
Anchor x 2

(Height: 6.6 mm, Inner diameter:2.4 mm, Length:26.4 mm)



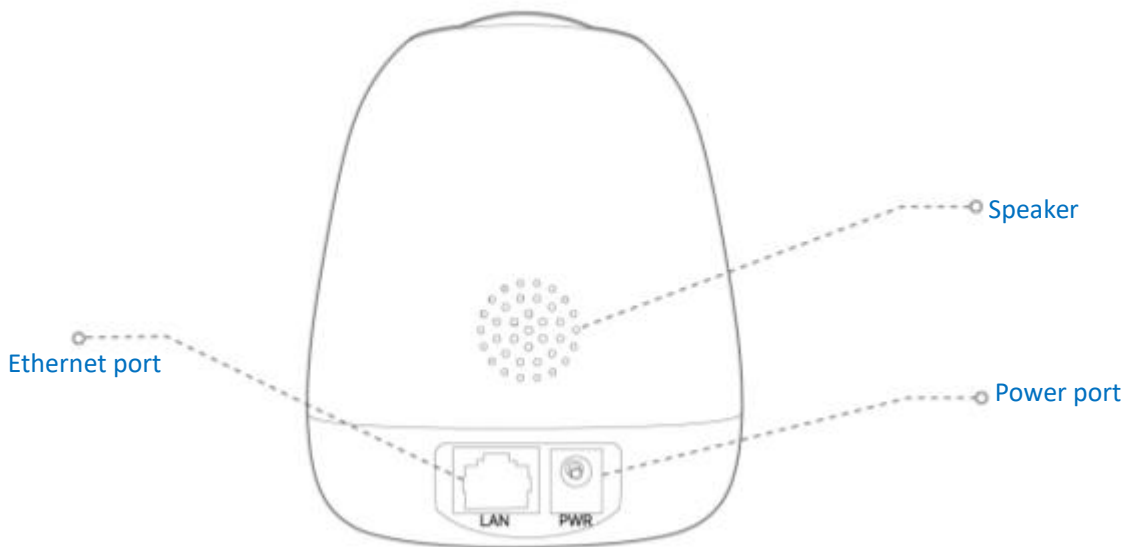
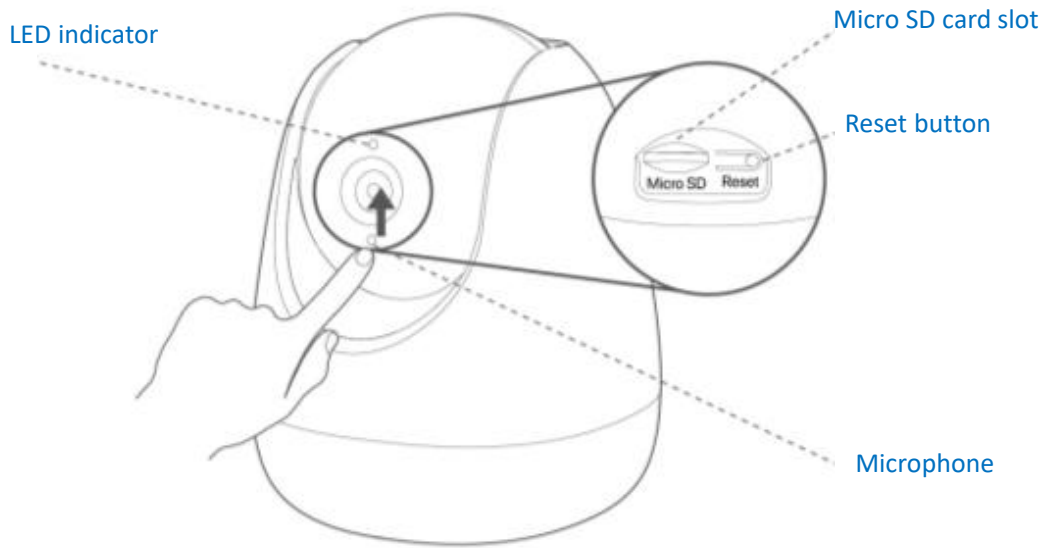
Screw x 2

(BA3 x 25 mm, Head diameter:6.0 mm)



Quick installation guide

# Appearance



LED indicator	<b>Solid red:</b> Initializing and starting.
	<b>Blinking red slowly:</b> Disconnected from a 2.4 GHz Wi-Fi network.
	<b>Blinking red quickly:</b> Connecting to a 2.4 GHz Wi-Fi network.
	<b>Solid blue:</b> Connected to a 2.4 GHz Wi-Fi network.
	<b>Blinking blue slowly:</b> Upgrading.
	<b>Blinking blue quickly:</b> Waiting to connect to a 2.4 GHz Wi-Fi network.
Ethernet port	10/100Mbps auto-negotiation Ethernet port, used for connecting the router, switch, etc.
Reset button	Hold down the <b>Reset</b> button for about 5 seconds and release it when the LED indicator blinks blue quickly or hear a prompt tone. The camera is reset to factory settings successfully.
Micro SD card slot	Turn the lens upward, then you can see it.

# Add the camera to TDSEE App

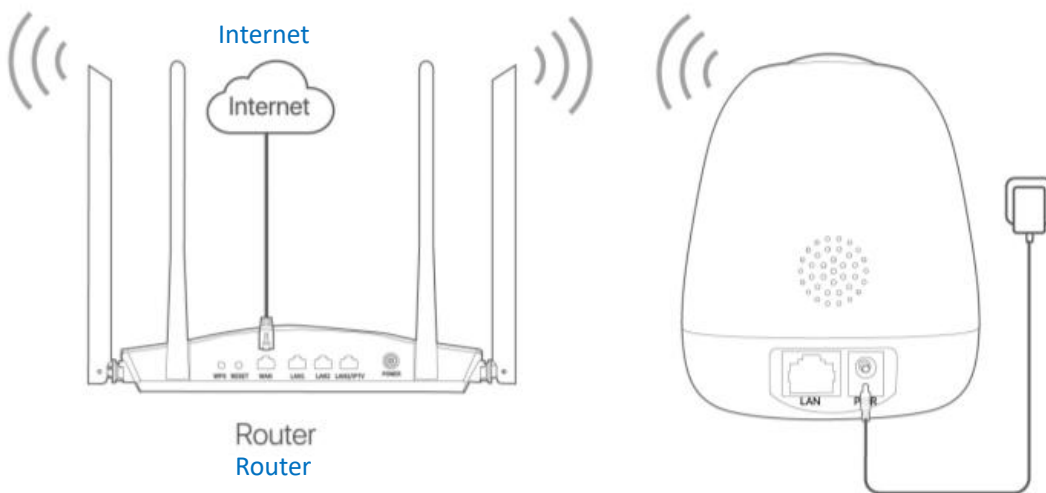


## Tips

Before adding your camera, please ensure that the router is connected to the internet successfully and the filter function is disabled.

1. Power on the camera.

The LED indicator lights solid red after the camera is powered on. When the LED indicator blinks blue quickly, the camera is waiting to connect to a 2.4 GHz Wi-Fi network.




2. Download the **TDSEE App** onto your mobile device by searching for **TDSEE** in the **App Store** or **Google Play** or by scanning the **QR code**.



Or



QR code

3. Run **TDSEE App** and follow the instructions to complete user registration. Enter the home page, tap the **Add a device** or the upper right corner of the home page .

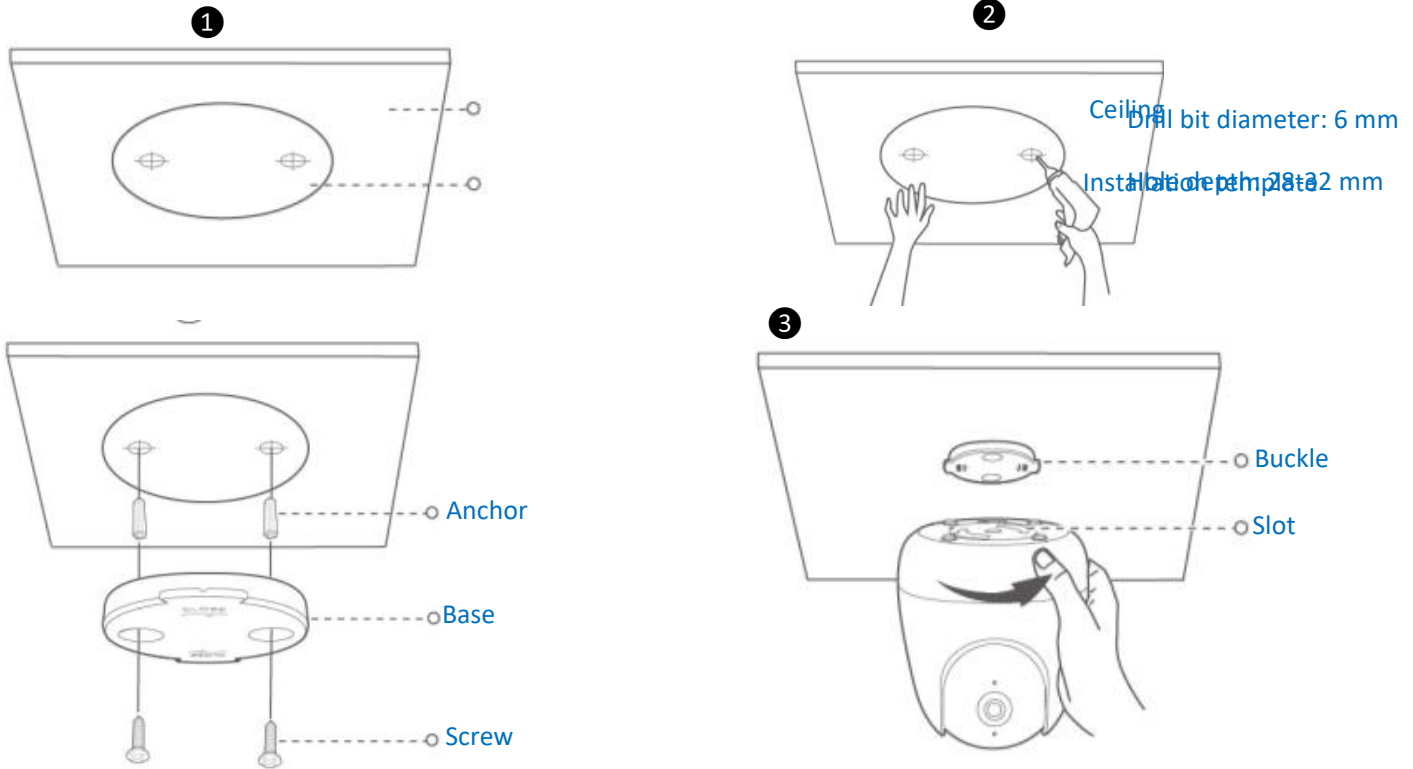
4. Scan the **QR** code on the bottom of the camera, and follow the instructions in the App.

# Install the device


The camera supports desktop, ceiling and wall installations. This guide takes ceiling installation as an example.

## Tips

- (1) Please make sure the ceiling is strong enough to withstand three times the weight of the camera and base.
- (2) You may need a hammer drill, a drill bit, a screwdriver, and a ladder for the installation.



After finishing the ceiling installation, in order to facilitate monitoring, you need to adjust the camera installation status.

**Methods:** Run the **TDSEE** App. Choose the camera on the home page, and tap **Settings** ( in the upper right corner) > **Video Flip-over**, choose **Camera UP-side Down**.

# FAQ

## Q1. What should I do if I failed to add the camera?

### A1. Try the following solutions:

- Ensure that the router is connected to the internet successfully.
- The **Security Pan/Tilt Camera** only supports 2.4 GHz Wi-Fi network. When adding the **Security Pan/Tilt Camera**, you need to connect the smartphone to a 2.4 GHz Wi-Fi network.
- Do not hide the Wi-Fi network of the router when adding the **Security Pan/Tilt Camera** (After adding the Wi-Fi network successfully, you can hide the Wi-Fi network).
- Confirm whether the LED indicator of the camera blinks blue quickly. If not, please reset the camera and configure it again.

**Reset method:** Hold the **Reset** button down for about 5 seconds and release it when the LED indicator blinks blue quickly or you hear a prompt tone. The **Security Pan/Tilt Camera** is reset successfully.

## Q2. What should I do when the video preview is not smooth?


### A2. Try the following solutions:

- Check if the Wi-Fi network of the router is smooth.
- Take the router closer to the camera.
- When previewing the video with cellular mobile data, make sure that the internet connection of the smartphone is smooth.
- **Auto**, **Fluent**, and **HD** are supported for video preview. By default, it is **Auto**. You can adjust the video clarity according to the internet status.

## Q3. How to store the video?

### A3. Try the following methods:

**Method 1:** Install the Micro SD card to the camera. By default, the camera's recording mode is **Alarm Recording**, this can be changed and set to **All-day Recording** through **TDSEE App**.

**Method:** Run **TDSEE App**, choose the **Security Pan/Tilt Camera** on the home page, then tap **Settings** ( in the upper right corner) → **Recording Settings**, choose **All-day Recording**.

**Method 2:** Subscribe to the Cloud Storage Service on **TDSEE App**.

**Method:** Run **TDSEE App**, choose the **Security Pan/Tilt Camera** on the home page, and then tap **Cloud** in the lower left corner. You can enjoy free cloud storage service (7-days loop detection recording) for 3 months upon the first activation.



## CE Mark Warning

This is a Class B product. In a domestic environment, this product may cause radio interference, in which case the user may be required to take adequate measures.

This equipment should be installed and operated with minimum distance 20cm between the device and your body.

The mains plug is used as disconnect device, the disconnect device shall remain readily operable.

**NOTE:** (1) The manufacturer is not responsible for any radio or TV interference caused by unauthorized modifications to this equipment. (2) To avoid unnecessary radiation interference, it is recommended to use a shielded RJ45 cable.

## Declaration of Conformity

Hereby, SHENZHEN TENDA TECHNOLOGY CO., LTD. declares that the radio equipment type **CP3/CP4/CP5/CP6/CP7/CP8/CP9** is in compliance with Directive 2014/53/EU.

The full text of the EU declaration of conformity is available at the following internet address:

<http://www.tendacn.com/en/service/download-cata-101.html>

Operating Frequency:

2.4 GHz: EU/2412-2472MHz (CH1-CH13)

EIRP Power (Max.):

2.4 GHz: 19dBm

Software Version: V1.0.X



### Caution:

Adapter Model: BN073-A09009E, BN073-A09009B

Manufacture: SHENZHEN HEWEISHUN NETWORK TECHNOLOGY CO., LTD.

Input: 100-240V AC, 50/60Hz 0.3A

Output: 9V DC, 1A



: DC Voltage

## Español

### DECLARACIÓN UE DE CONFORMIDAD SIMPLIFICADA

Por la presente, SHENZHEN TENDA TECHNOLOGY CO., LTD., declara que e1 tipo de equipo radioelectrico **CP3/CP4/CP5/CP6/CP7/CP8/CP9** es conforme con 1a Directiva 2014/53/UE.

El texto completo de la declaración UE de conformidad está disponible en la dirección Internet siguiente:

<http://www.tendacn.com/en/service/download-cata-101.html>

## Čeština

### ZJEDNODUŠENÉ EU PROHLÁŠENÍ O SHODĚ

Tímto SHENZHEN TENDA TECHNOLOGY CO., LTD., prohlašuje, že typ rádiového zařízení **CP3/CP4/CP5/CP6/CP7/CP8/CP9** je v souladu se směrnicí 2014/53/EU. Úplné znění EU prohlášení o shodě je k dispozici na této internetové adrese:

<http://www.tendacn.com/en/service/download-cata-101.html>

## Deutsch

### VEREINFACHTE EU-KONFORMITÄTSERKLÄRUNG

Hiermit erklärt SHENZHEN TENDA TECHNOLOGY CO., LTD., dass der Funkanlagentyp **CP3/CP4/CP5/CP6/CP7/CP8/CP9** der Richtlinie 2014/53/EU entspricht.

Der vollständige Text der EU-Konformitätserklärung ist unter der folgenden Internetadresse verfügbar:

<http://www.tendacn.com/en/service/download-cata-101.html>

## Français

### DECLARATION UE DE CONFORMITE SIMPLIFIEE

Le soussigné, SHENZHEN TENDA TECHNOLOGY CO., LTD., déclare que l'équipement radioélectrique du type **CP3/CP4/CP5/CP6/CP7/CP8/CP9** est conforme à la directive 2014/53/UE.

Le texte complet de la déclaration UE de conformité est disponible à l'adresse internet suivante:

<http://www.tendacn.com/en/service/download-cata-101.html>

## Italiano

### DICHIARAZIONE DI CONFORMITÀ UE SEMPLIFICATA

Il fabbricante, SHENZHEN TENDA TECHNOLOGY CO., LTD., dichiara che il tipo di apparecchiatura radio **CP3/CP4/CP5/CP6/CP7/CP8/CP9** è conforme alla direttiva 2014/53/UE.

Il testo completo della dichiarazione di conformità UE è disponibile al seguente indirizzo Internet:

<http://www.tendacn.com/en/service/download-cata-101.html>

## Polski

### UPROSZCZONA DEKLARACJA ZGODNOŚCI UE

SHENZHEN TENDA TECHNOLOGY CO., LTD. niniejszym oświadcza, że typ urządzenia radiowego **CP3/CP4/CP5/CP6/CP7/CP8/CP9** jest zgodny z dyrektywą 2014/53/UE.

Pełny tekst deklaracji zgodności UE jest dostępny pod następującym adresem internetowym:

<http://www.tendacn.com/en/service/download-cata-101.html>

## Română

### DECLARAȚIA UE DE CONFORMITATE SIMPLIFICATĂ

Prin prezenta, SHENZHEN TENDA TECHNOLOGY CO., LTD. declară că tipul de echipamente radio

**CP3/CP4/CP5/CP6/CP7/CP8/CP9** este în conformitate cu Directiva 2014/53/UE. Textul integral al declarației UE de conformitate este disponibil la următoarea adresă internet:

<http://www.tendacn.com/en/service/download-cata-101.html>



## Русский

Декларация соответствия

SHENZHEN TENDA TECHNOLOGY CO. LTD. заявляет, что радиооборудование типа **CP3/CP4/CP5/CP6/CP7/CP8/CP9** соответствует Директиве 2014/53 / ЕС. Полный текст декларации соответствия ЕС доступен по следующему интернет-адресу: <http://www.tendacn.com/en/service/download-cata-101.html>

## Türkçe

Uygunluk Beyanı

Burada, SHENZHEN TENDA TECHNOLOGY CO., LTD., **CP3/CP4/CP5/CP6/CP7/CP8/CP9** radio ekipman tipinin 2014/53/EU direktiflerine uygun olduğunu beyan eder.

Avrupa uygunluk beyannamesinin tam metni takip eden internet adresinde mevcuttur.

<http://www.tendacn.com/en/service/download-cata-101.html>

## عربى

إقرار المطابقة

بموجب هذا، تعلن شركة SHENZHEN TENDA TECHNOLOGY CO., LTD. أن نوع المعدات اللاسلكية **CP9/ CP8/CP7/CP6/CP5/CP4/CP3** يتوافق مع التوجيه 2014/53/EU.

يتوفر النص الكامل لإقرار المطابقة مع الاتحاد الأوروبي على عنوان الإنترنت التالي:

<http://www.tendacn.com/en/service/download-cata-101.html>

## RCM



## EAC


**EAC**

# NOM

LA OPERACIÓN DE ESTE DISPOSITIVO ESTA SUJETA A LAS SIGUIENTES CONDICIONES:

- a) Es posible que este equipo o dispositivo no cause interferencia perjudicial.
- b) Este equipo o dispositivo debe aceptar cualquier tipo de interferencia, incluyendo la que pueda causar su operación no deseada.

Estimado usuario: Antes de utilizar este producto lo invitamos a leer el siguiente manual para que conozca todas sus funciones y características.

Producto	NOMBRE DEL PRODUCTO: Cámara de seguridad con panorámica e inclinación MODELO: CP3/CP4/CP5/CP6/CP7/CP8/CP9
Alimentador de Energía: Alimentación: 100V - 240V ca 50Hz/60Hz, 0.3A Salida: 9V cc 1A	



## FCC Statement

This equipment has been tested and found to comply with the limits for a Class B digital device, pursuant to Part 15 of the FCC Rules. These limits are designed to provide reasonable protection against harmful interference in a residential installation. This equipment generates, uses and can radiate radio frequency energy and, if not installed and used in accordance with the instructions, may cause harmful interference to radio communications. However, there is no guarantee that interference will not occur in a particular installation. If this equipment does cause harmful interference to radio or television reception, which can be determined by turning the equipment off and on, the user is encouraged to try to correct the interference by one or more of the following measures:

- Reorient or relocate the receiving antenna.
- Increase the separation between the equipment and receiver.
- Connect the equipment into an outlet on a circuit different from that to which the receiver is connected.
- Consult the dealer or an experienced radio/TV technician for help.

Operation is subject to the following two conditions: (1) this device may not cause harmful interference, and (2) this device must accept any interference received, including interference that may cause undesired operation.

### Radiation Exposure Statement

This device complies with FCC radiation exposure limits set forth for an uncontrolled environment and it also complies with Part 15 of the FCC RF Rules.

This equipment should be installed and operated with minimum distance 20cm between the device and your body.

### Caution:

Any changes or modifications not expressly approved by the party responsible for compliance could void the user's authority to operate this equipment.

This transmitter must not be co-located or operating in conjunction with any other antenna or transmitter.

Operating frequency: 2412-2462MHz

**NOTE:** (1) The manufacturer is not responsible for any radio or TV interference caused by unauthorized modifications to this equipment. (2) To avoid unnecessary radiation interference, it is recommended to use a shielded RJ45 cable.



**RECYCLING**

This product bears the selective sorting symbol for Waste electrical and electronic equipment (WEEE). This means that this product must be handled pursuant to European directive 2012/19/EU in order to be recycled or dismantled to minimize its impact on the environment.

User has the choice to give his product to a competent recycling organization or to the retailer when he buys new electrical or electronic equipment.

Operating Temperature: -10°C - 40°C

Operating Humidity: (10% - 95%) RH, non-condensing

## Technical Support

Shenzhen Tenda Technology Co., Ltd.

6-8 Floor, Tower E3, NO.1001, Zhongshanyuan Road, Nanshan District, Shenzhen, China. 518052

USA hotline: 1-800-570-5892

Toll Free: 7 x 24 hours

Canada hotline: 1-888-998-8966

Toll Free: Mon - Fri 9 am - 6 pm PST

Hong Kong hotline: 00852-81931998

Global hotline: +86 755-2765 7180 (China Time Zone)

Website: [www.tendacn.com](http://www.tendacn.com)

E-mail: [support@tenda.com.cn](mailto:support@tenda.com.cn)

## Copyright

© 2021 Shenzhen Tenda Technology Co., Ltd. All rights reserved.

Tenda is a registered trademark legally held by Shenzhen Tenda Technology Co., Ltd. Other brand and product names mentioned herein are trademarks or registered trademarks of their respective holders. Specifications are subject to change without notice.