

# Solar Street Light - 1600Lm - 15W



Patented design, slim, smart, durable and easy to install.



Professional optical lens with a wide lighting area and improved brightness.



A 5° tilt design to obtain better solar energy. It is also helpful for solar panel cleaning and water drainage on rainy days.



Patented smart working modes with smart and longer lighting times.



A 10800mAh lithium battery providing power and SMD2835 chips with high lumen and long daily use times.



Easily adjustable for the optimal angle for solar charging. The lamp can be adjusted 20° upward and 10° downward.



Installation options: 1. Wall mounted.  
2. Straight pole installation.  
3. Curved pole installation.



High-quality, high-efficiency mono-crystalline silicon solar panels for high efficient conversion of solar power to electricity.



Induction design with a wide angle, long-distance motion detection sensor.

**15W**

Power

**IP65**

Waterproof

**1600**

Lumens

**2 Years**

Warranty (Battery - 1 Year)

**140°X70°**

Beam Angle

**6 Hours**

Solar charging time

## Specifications

▶ **Product Model**

LD-SSL-15W-Pro

▶ **Power**

15W

▶ **Lumens**

1600Lm

▶ **LED Type**

SMD 2835\*40pcs

▶ **Solar Panel**

Mono-crystalline silicon (9.5Wp)

▶ **Battery**

5400mAh/7.4V Lithium battery

▶ **Charging Time**

6-7 Hours per day

▶ **Working Time**

Auto adjustable - 4-5 days depending on mode

▶ **Overall Dimensions**

493mm x 232mm x 58mm

▶ **PIR Sensor Range**

Detection angle: 120° Detection area: 3-8M

▶ **Beam Angle**

140°X70° - Type III

▶ **IP Class**

IP65

▶ **Product Colour**

Black

▶ **Housing Material**

ABS + PC

▶ **Working Temperature**

-15°C - 50°C

▶ **Storage Temperature**

0°C - 50°C

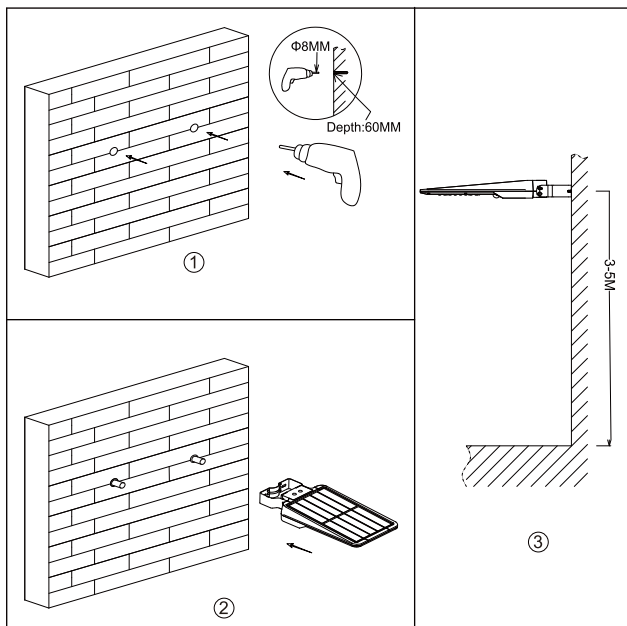
▶ **Warranty**

2 years (Battery - 1 year)



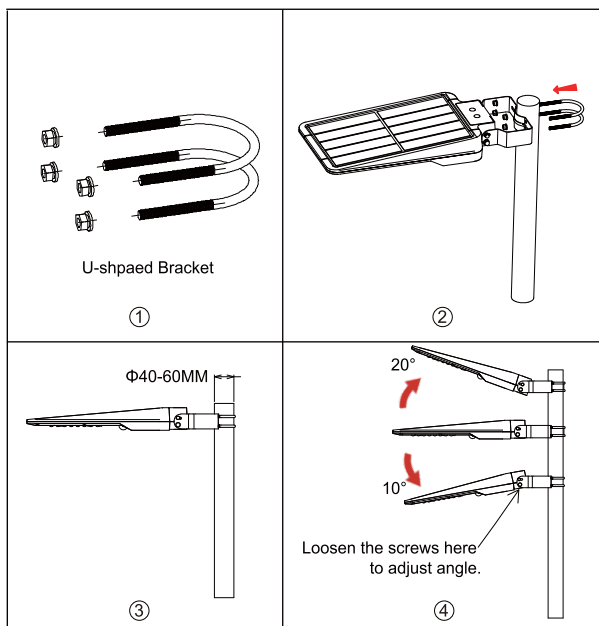
## 3 Different Installations

### Installation A: Wall Mounted



1. Prepare the lamp, accessories and tools.
2. Drill two holes of  $\Phi 8\text{mm}$  with a depth of 60mm to align with the holes in the light bracket. (Picture 1)
3. Fix the expansion plugs into the two holes. (Picture 2)
4. Fix the lamp onto the wall with screws. (Picture 3)

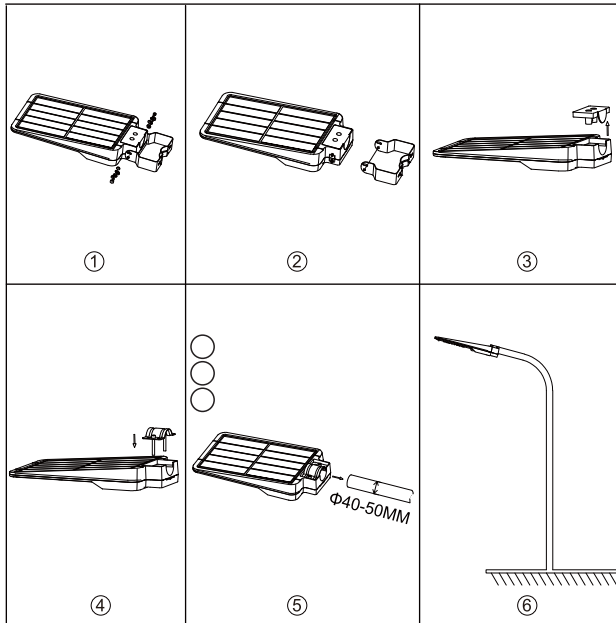
### Installation B: Straight Pole



1. Prepare the lamp, accessories and tools.
2. Remove the nut spacers from the U-shaped brackets. (Picture 1)
3. Use the U-shaped brackets to fix the lamp onto the pole (Picture 3)
4. Loosen the screws at both ends of the bracket and adjust the angle of the lamp as needed, which is 20° adjustable in clockwise direction and 10° adjustable in counterclockwise direction, then tighten the screws. (Picture 3 4)

\*This installation applies to poles with a diameter of 40-60mm

## Installation C: Curved Pole



1. Prepare the lamp, accessories and tools.
  2. Loosen the screws and take off the bracket. (Picture 1 2)
  3. Move the cover from the lamp socket (Picture 3)
  4. Fix the arch-shaped bracket onto the lamp socket. Do not lock! (Picture 4)
  5. Set up the lamp onto the lamp pole. (Picture 5)
  6. Adjust the lamp and balance it, then lock the arch-shaped bracket. (Picture 6)
- \* This installation applies to the poles with a diameter of  $\Phi 40-50\text{MM}$ .

## Working Mode

### Smart Button:



#### **ON/OFF**

The lamp is equipped with an auto-adjusting working mode. Once the On/Off switch is pressed the auto function will work permanently.

### First 5 Hours lighting:



Automatically turns on to full brightness (1600Lm) when motion is detected in the range  $\leq 8$  meters and then turns to weak brightness in 20 seconds of no motion.

### After 5 Hours lighting or when battery capacity is below 30%:



Automatically turns on to full brightness (1600Lm) when motion is detected in the range  $\leq 8$  meters and then turns to weak brightness in 20 seconds of no motion, then turns off after 5 minutes.