

The Watchdog App



App Setup Instructions

See App setup video or follow the step by step instructions below.

Download the free AVP-Secure APP (On Apple App Store IOS iPhones and on Google App Store for Android Phones)



Upon opening the packaging, you will find the following:

- 1 x Transmitter
- 1 x Magnet
- 1 x Screwdriver
- 2 x AA Batteries (One battery already installed in the Transmitter)
- 1 x Adhesive Tape



Step 1 (Inserting the batteries):

- Use the screwdriver to open the battery compartment, on the back of the Transmitter
- Insert the second AA battery into the battery compartment
- Ensure to check that the battery is inserted with the correct polarity
- Close the battery compartment, using caution to not overtight the screw
- The Watchdog Transmitter is now active, and ready to be registered on your phone



Step 2 (Download the AVPSecure App):

- Download the free AVPSecure App onto your mobile phone
- For iPhone users, visit the Apple App Store, and search for AVPSecure
- For Android users, visit the Google App Store, and search for AVPSecure



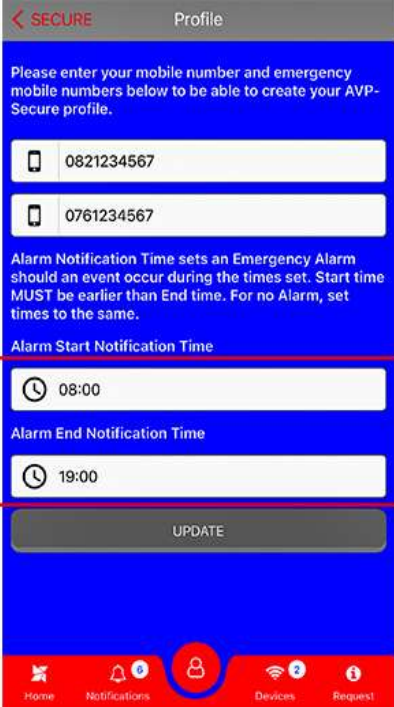
Step 3 (Creating your profile):

- Create your AVP-Secure profile, by entering your mobile phone number on the AVPSecure App (Click on the Profile Tab, at the bottom of the screen)
- Also enter an emergency number in the second field (This could be any emergency number you choose, for example: The local police, the control room for your local security service, the site supervisor at a property, your spouse, trusted family member or neighbour etc)

The screenshot shows the 'Profile' screen in the AVP-Secure app. At the top, there is a back arrow and the word 'SECURE' in red, followed by the title 'Profile'. Below this, a blue banner contains the instruction: 'Please enter your mobile number and emergency mobile numbers below to be able to create your AVP-Secure profile.' Two input fields are visible, each with a mobile phone icon on the left. The first field contains the number '0821234567' and the second field contains '0761234567'. These two fields are enclosed in a red rectangular box. Below the input fields, there is a blue section with the text: 'Alarm Notification Time sets an Emergency Alarm should an event occur during the times set. Start time MUST be earlier than End time. For no Alarm, set times to the same.' This is followed by two time selection fields: 'Alarm Start Notification Time' with a clock icon and the value '08:00', and 'Alarm End Notification Time' with a clock icon and the value '19:00'. At the bottom of this section is a grey button labeled 'UPDATE'. The bottom of the screen features a red navigation bar with four icons: 'Home', 'Notifications' (with a blue circle containing the number '0'), 'Profile' (with a blue circle containing a white person icon), 'Devices' (with a blue circle containing the number '2'), and 'Request'.

Step 4 (Setting the notification period on AVPSecure App):

- Set the time window, for which you would like to receive alert notifications from the Watchdog
- In case you wish to receive no notifications, set the start, and end time to be same
- Click on "Update" to confirm your AVP-Secure Profile

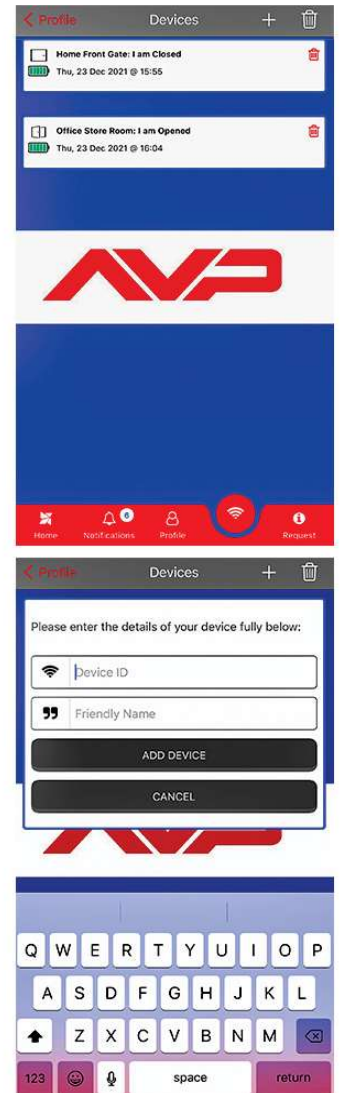


The screenshot shows the 'Profile' page in the AVPSecure app. At the top, there is a back arrow and the word 'SECURE' in red, followed by the title 'Profile'. Below this, a blue banner contains the text: 'Please enter your mobile number and emergency mobile numbers below to be able to create your AVP-Secure profile.' There are two input fields for mobile numbers, both containing '0821234567' and '0761234567' respectively. Below the input fields, a blue banner explains: 'Alarm Notification Time sets an Emergency Alarm should an event occur during the times set. Start time MUST be earlier than End time. For no Alarm, set times to the same.' The 'Alarm Start Notification Time' is set to '08:00' and the 'Alarm End Notification Time' is set to '19:00'. These two time settings are enclosed in a red rectangular box. At the bottom of the form is a grey 'UPDATE' button. The bottom navigation bar is red and contains icons for Home, Notifications (with a '6' badge), Profile (with a red circle around the icon), Devices (with a '2' badge), and Request (with a '1' badge).

Step 5 (Registering your Watchdog Unit(s) on AVPSecure App):

- Click on the Devices Tab, at the bottom of the screen
- Click on the + Icon, top-right of the Devices screen
- **For iPhones:**
 - Enter the Device ID of your Watchdog Unit in the first field (You will find the Device ID on the side of the packaging of your Unit)
- **For Android Phones:**
 - Scan the QR Code on the Watchdog Packaging (You will find the QR Code and Device ID on the side of the packaging of your Unit)
 - Alternatively, enter the Device ID of your Watchdog Unit in the first field (You will find the Device ID on the side of the packaging of your Unit)
- Enter a Friendly Name in the second field (This is a name that you will recognise, depending on where you install the specific Watchdog Unit)
- Examples:
 - Front Gate – HomeVault in Office
 - My laptop bag
 - My Red Bicycle
 - Sliding Gate Motor
 - Outside DB Box
- Click on “Add Device”
- Repeat this step for adding more Watchdog Devices, if required

You will now see each Watchdog Device active on the Devices Screen on the AVP-Secure App



Step 6 (Test your Watchdog Unit(s) on AVP Secure App):

Attach the Magnet to the Watchdog Transmitter

- Your phone will sound an alarm and you will receive a notification on the AVP-Secure App's home screen
- Example: Front Gate – Home – I am Closed
- The notification will show the date and time when the Magnet connected with the Transmitter



Remove the Magnet from the Watchdog Transmitter

- Your phone will sound an alarm and you will receive a notification on the AVP-Secure App's home screen
- Example: Front Gate – Home – I am Open



Tap with your finger against the Watchdog Transmitter

- Your phone will sound an alarm and you will receive a notification on the AVP-Secure App's home screen
- Example: Front Gate – Home – I am Under Attack



Step 7 (Attach your Watchdog Unit(s) to your preferred area or item for protection):

- Front Gate of your home/office
- Any door entry of your home/office
- Any window of your home/office
- Any temporary entry point at your home, office, or business premises
- Your Trailer or Truck's Canopy
- Your SUV's Spare wheel
- Your sports equipment, such as Golf Clubs, Gym bag or Bicycle
- Your essential electrical DB boxes
- Your Sliding Gate, or Gate Motor
- Your handbag or laptop bag

